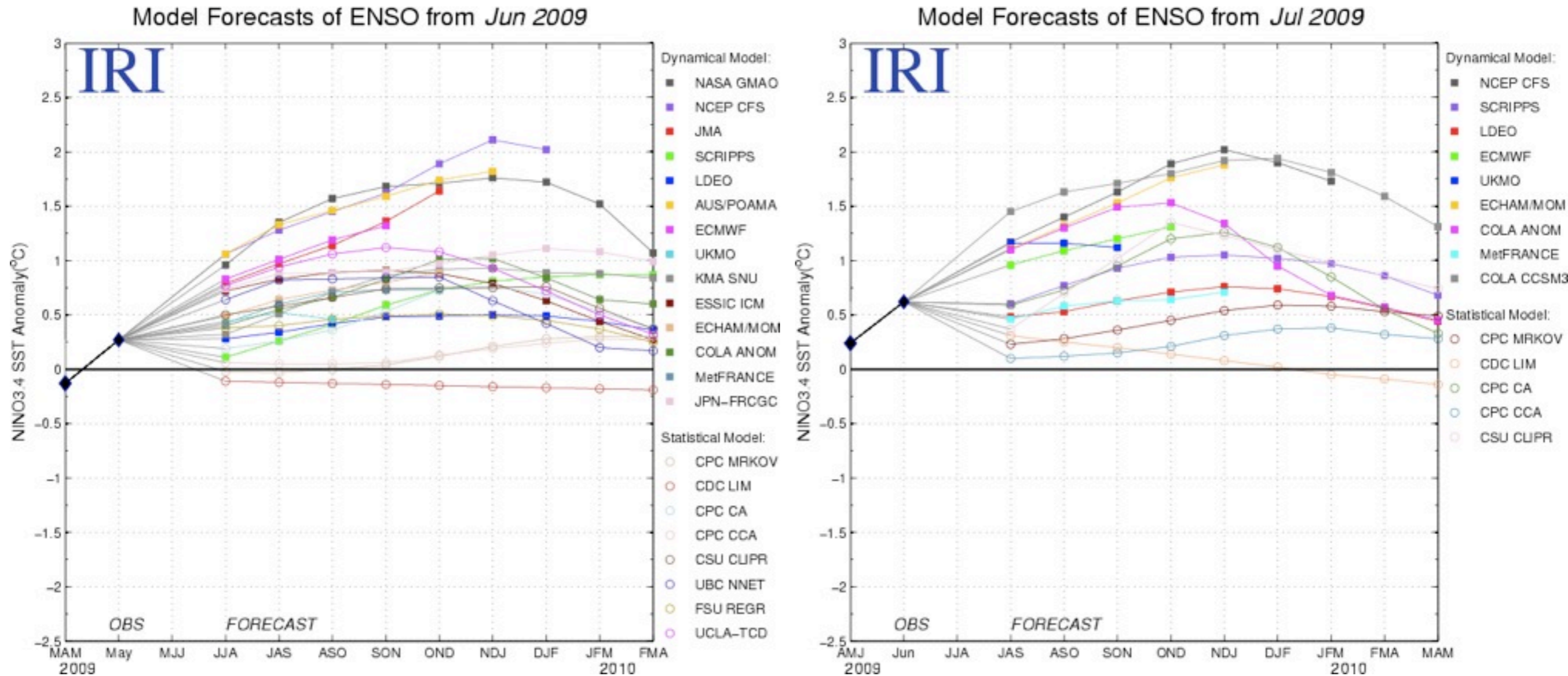


Nino3.4 SST Forecast Plumes (partial)

as of 11 July 2009



They are not very different, implying no change in expecting a weak to moderate El Nino. Two more forecasts came in since we made this plume, and both are on the high side (NASA peaks at 2.0, and and UCLA regression around 1.7). Bottom line is slightly greater certainty in expectation of weak to moderate El Nino. The Modoki type looks unlikely. There is only a small chance of a strong event, or of a false start that won't endure more than a month or two. -- Tony Barnston (11 July 2009)