

Enhancement of El Niño Monitoring and Outlook at JMA

JMA just has enhanced El Niño Monitoring and Outlook since July 2009.



Welcome to Tokyo Climate Center

[Home](#) [World Climate](#) [Climate System Monitoring](#) [El Niño Monitoring](#) [NWP Model Prediction](#) [Glob](#)

[HOME](#) > [El Niño Monitoring](#)

El Niño Monitoring and Outlook

JMA operates the Ocean Data Assimilation System and the El Niño Prediction System (an ocean-atmosphere coupled r (ENSO). Monthly diagnosis reports, ENSO monitoring products, ENSO indices and El Niño outlooks are available on this

Main Products

Latest Products last updated : 11 Jun 2009

Brief summary appears when moving your mouse over the links with broken lines.

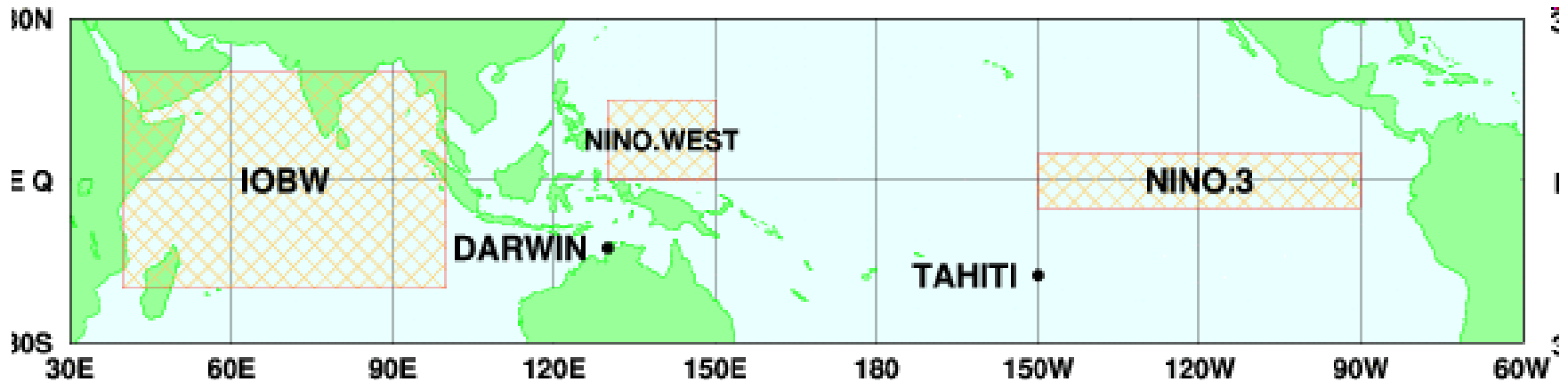
- ▶ [Current Diagnosis](#)
- ▶ [El Niño Outlook](#)
- ▶ [Figures and Tables](#)
- ▶ [Download El Niño Monitoring Indices](#)
- ▶ [Model forecast of SST anomalies for Niño regions](#)

ENSO Impacts

- ▶ [Global Climate](#)
- ▶ [Atmosphere Circulation](#)

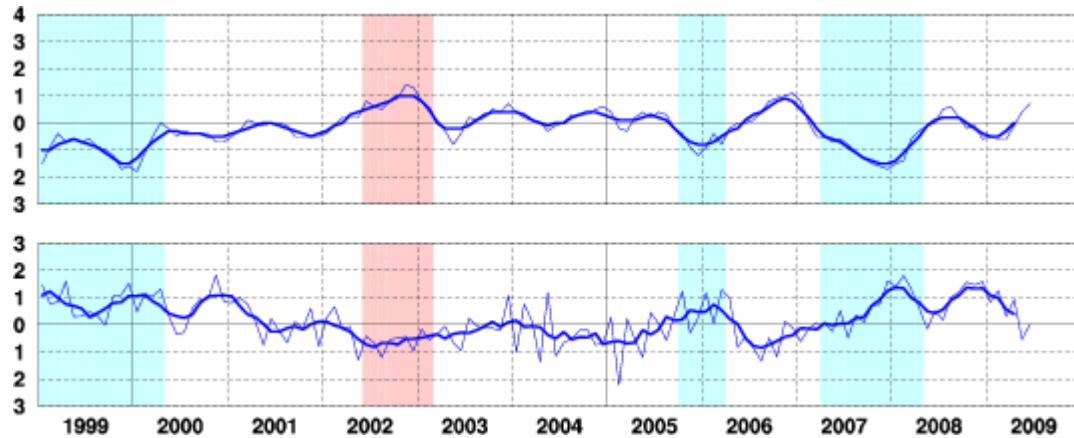
Contents of enhancement

- Newly added information about the following two regions
NINO.WEST
IOBW (Indian Ocean Basin Wide)



SST index and SOI

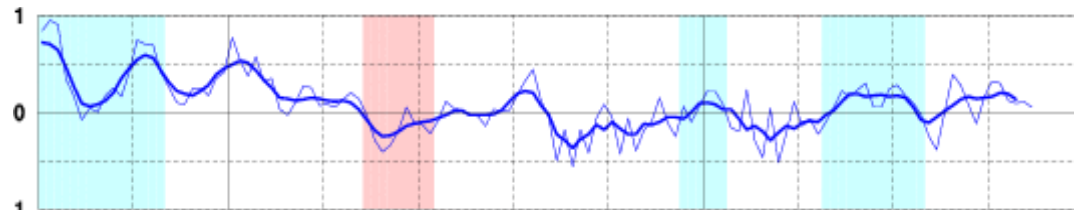
Nino-3



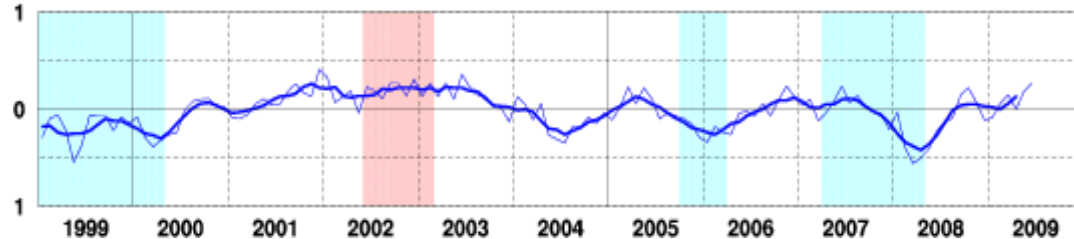
SOI



NINO.WEST

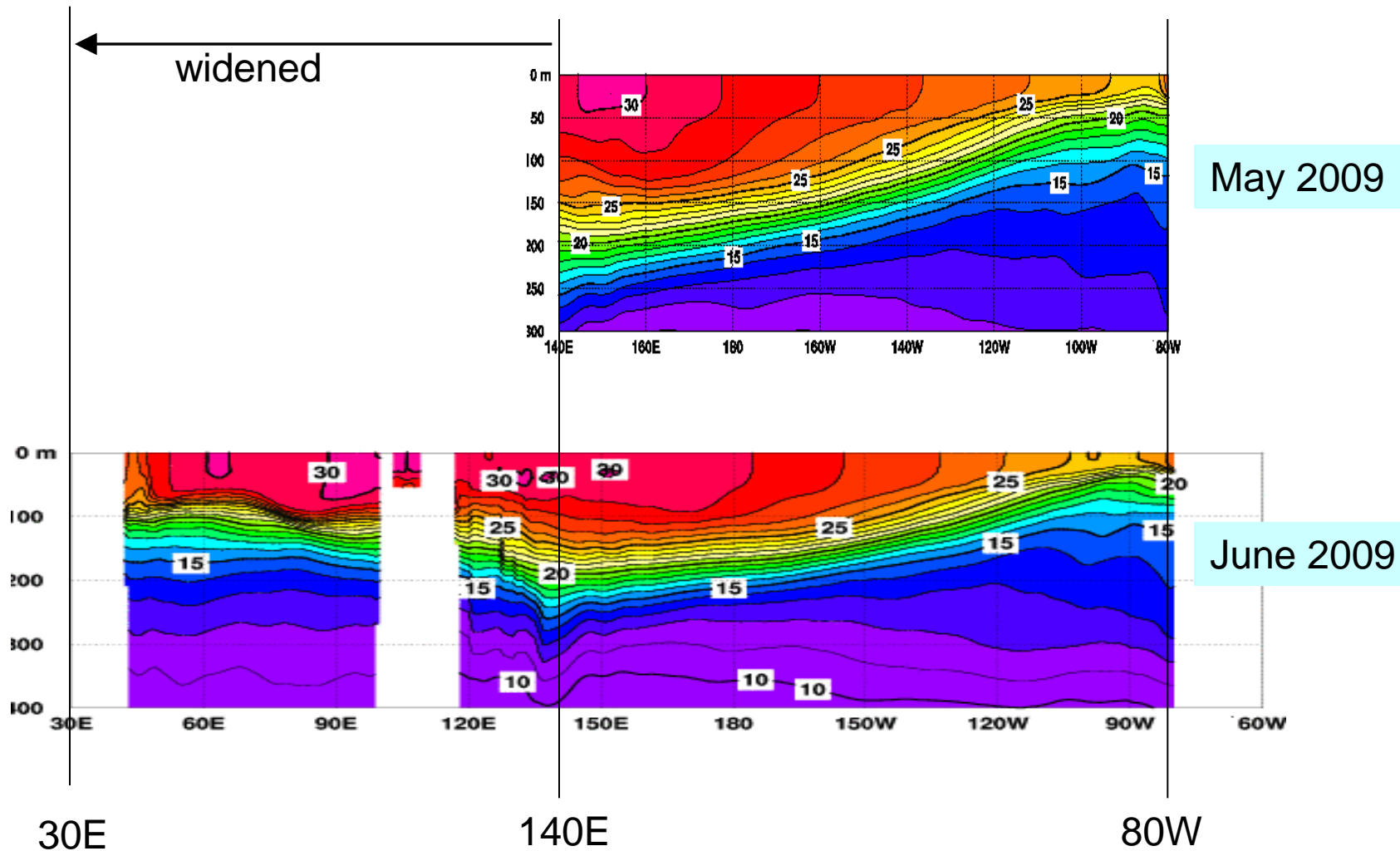


IOBW

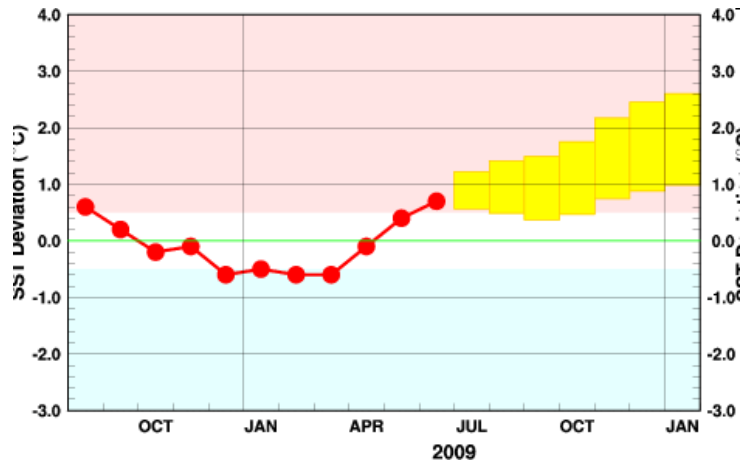


Newly added

Cross-section along the EQ

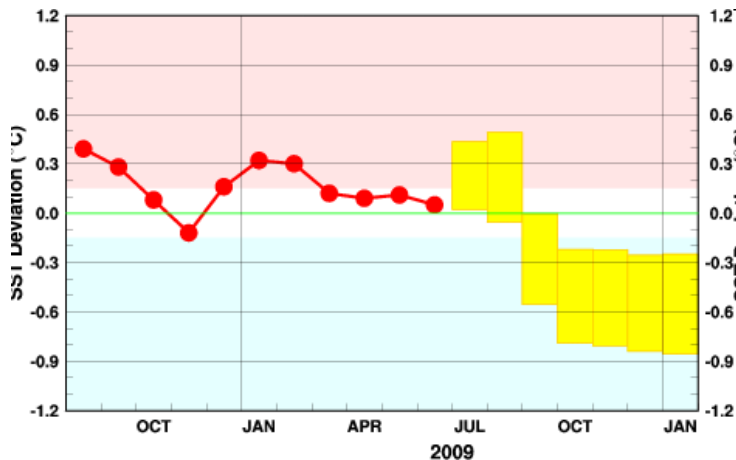


Outlook

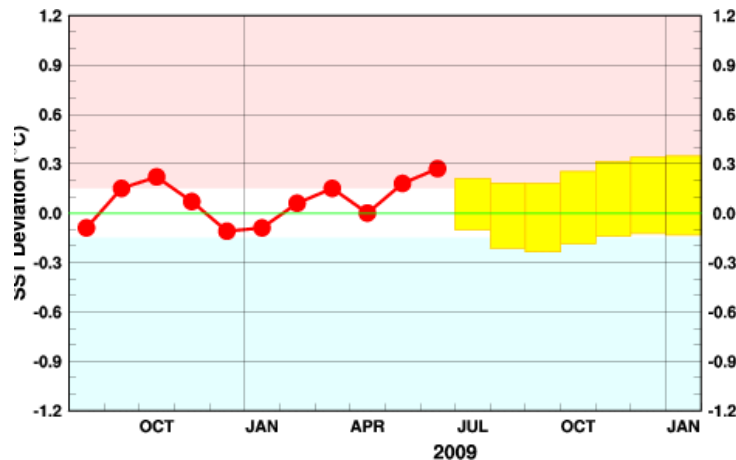


NINO.3

June 2009 issue



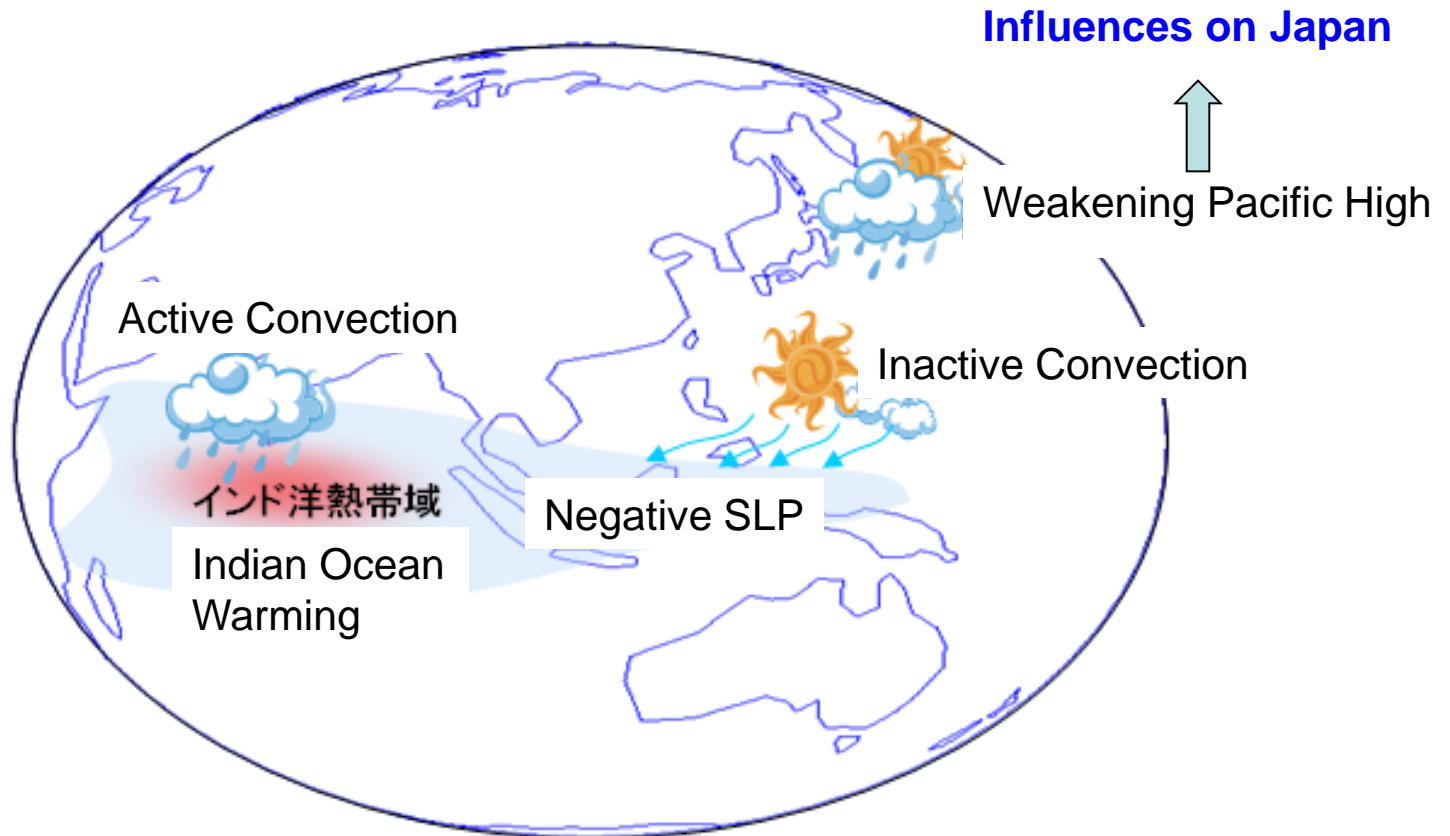
NINO.WEST



IOBW

July 2009 issue

Why ?



Ref. Xie et. Al.(2008)