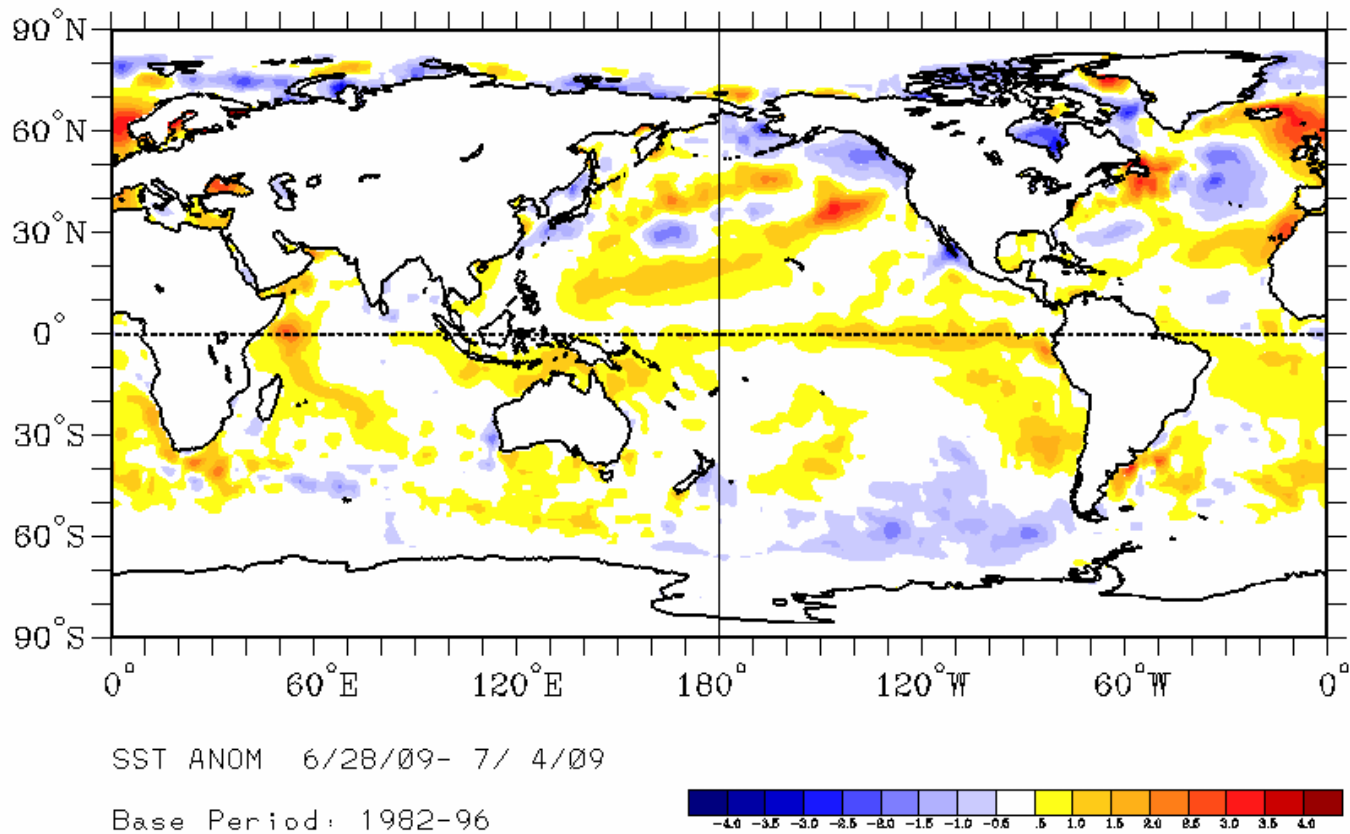
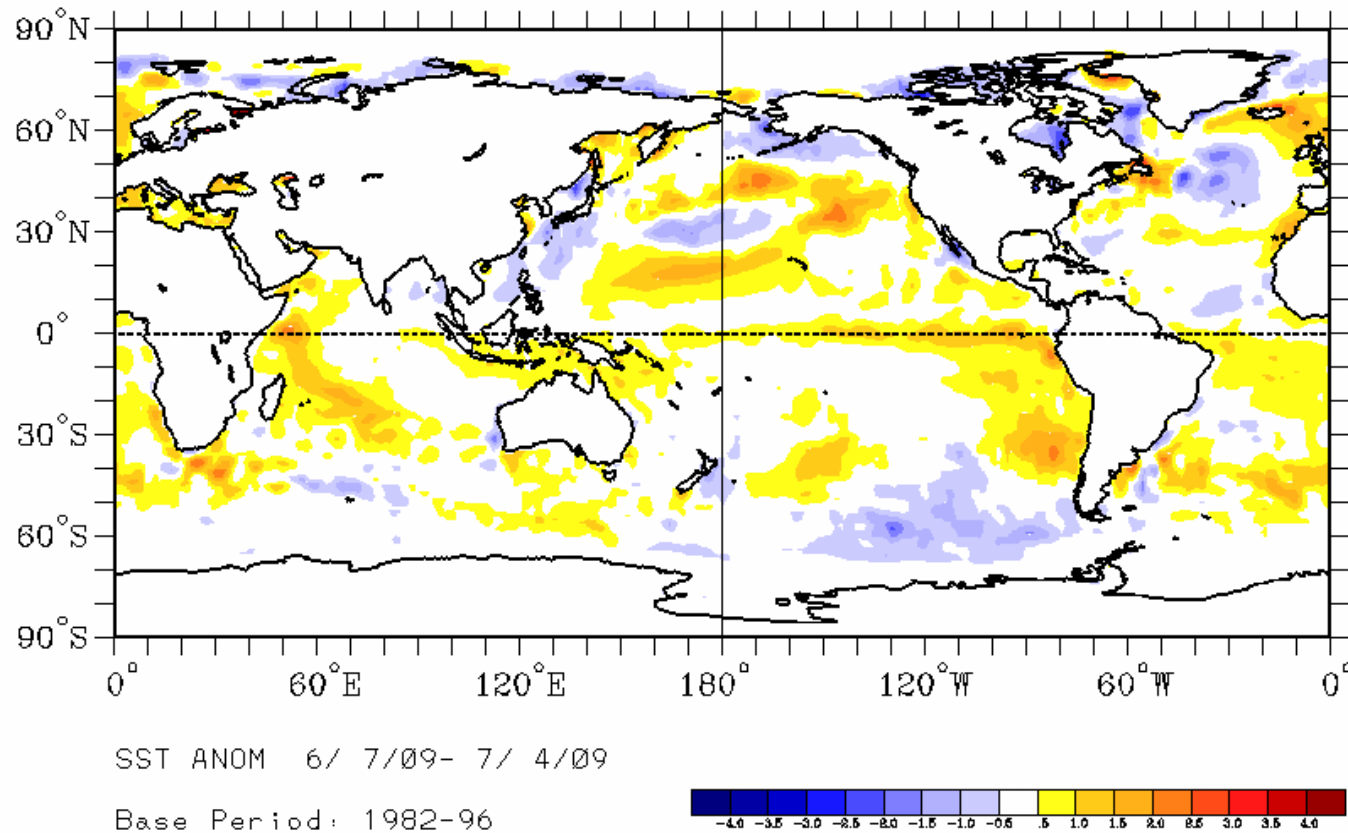


Does this El Nino have sustaining  
power?

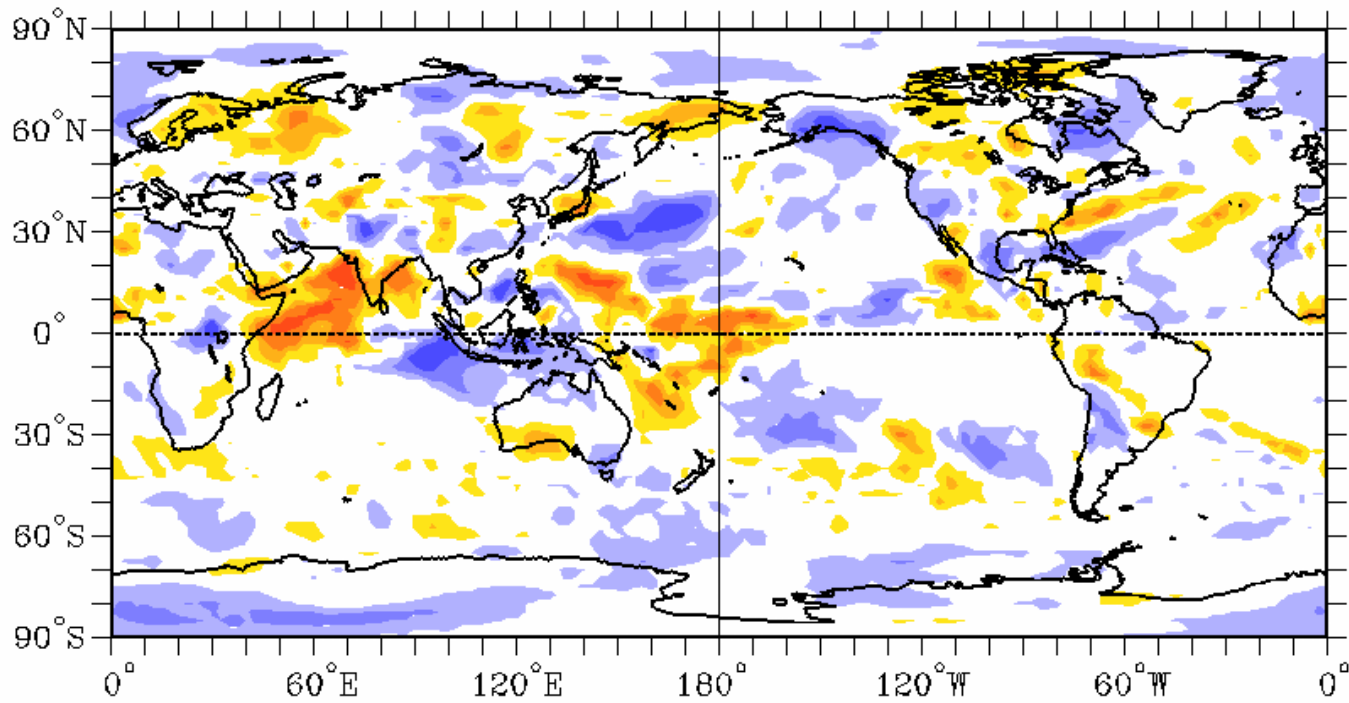
# This week's SST anomaly



# This month's SST anomaly

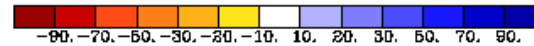


# This week OLR anomaly

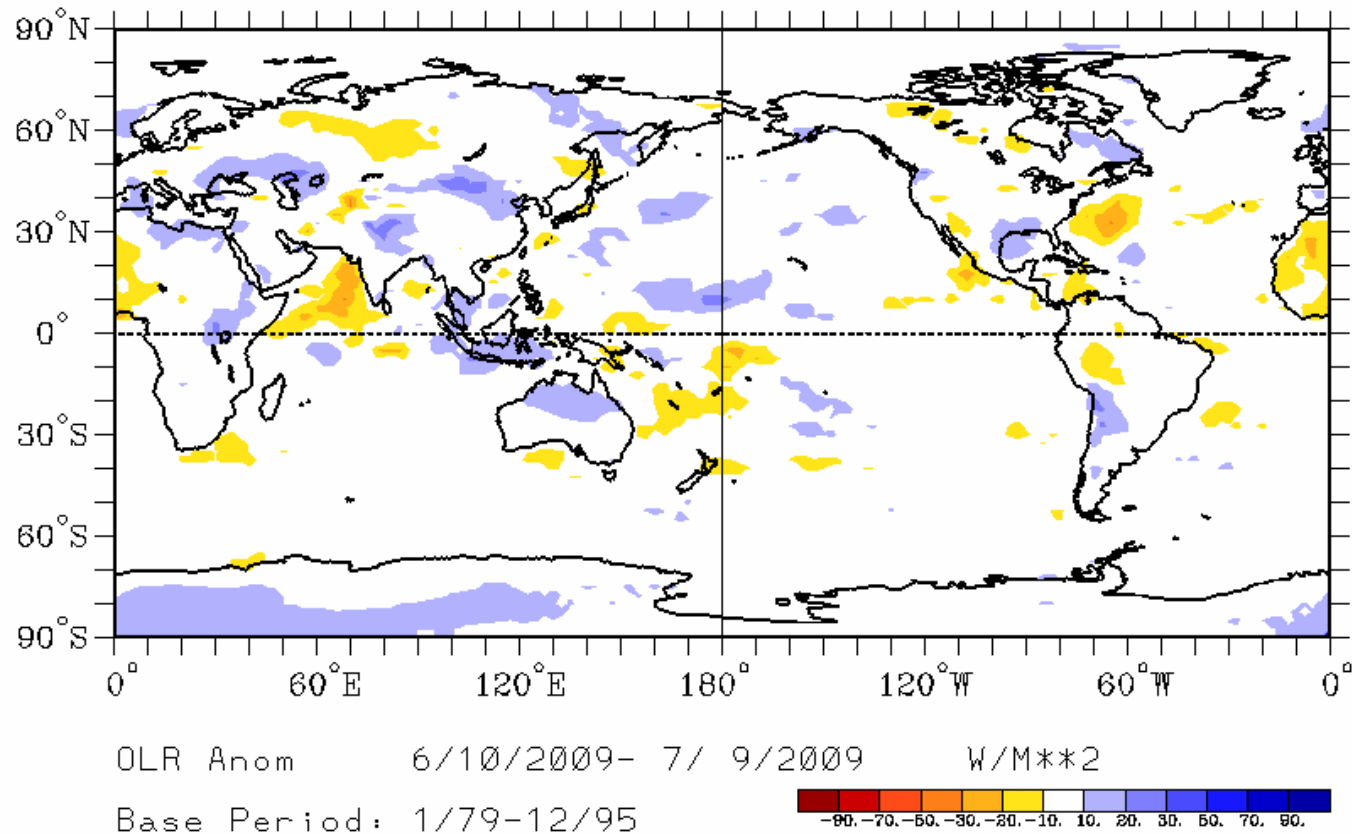


OLR Anom 7/ 3/2009- 7/ 9/2009 W/M\*\*2

Base Period: 1/79-12/95

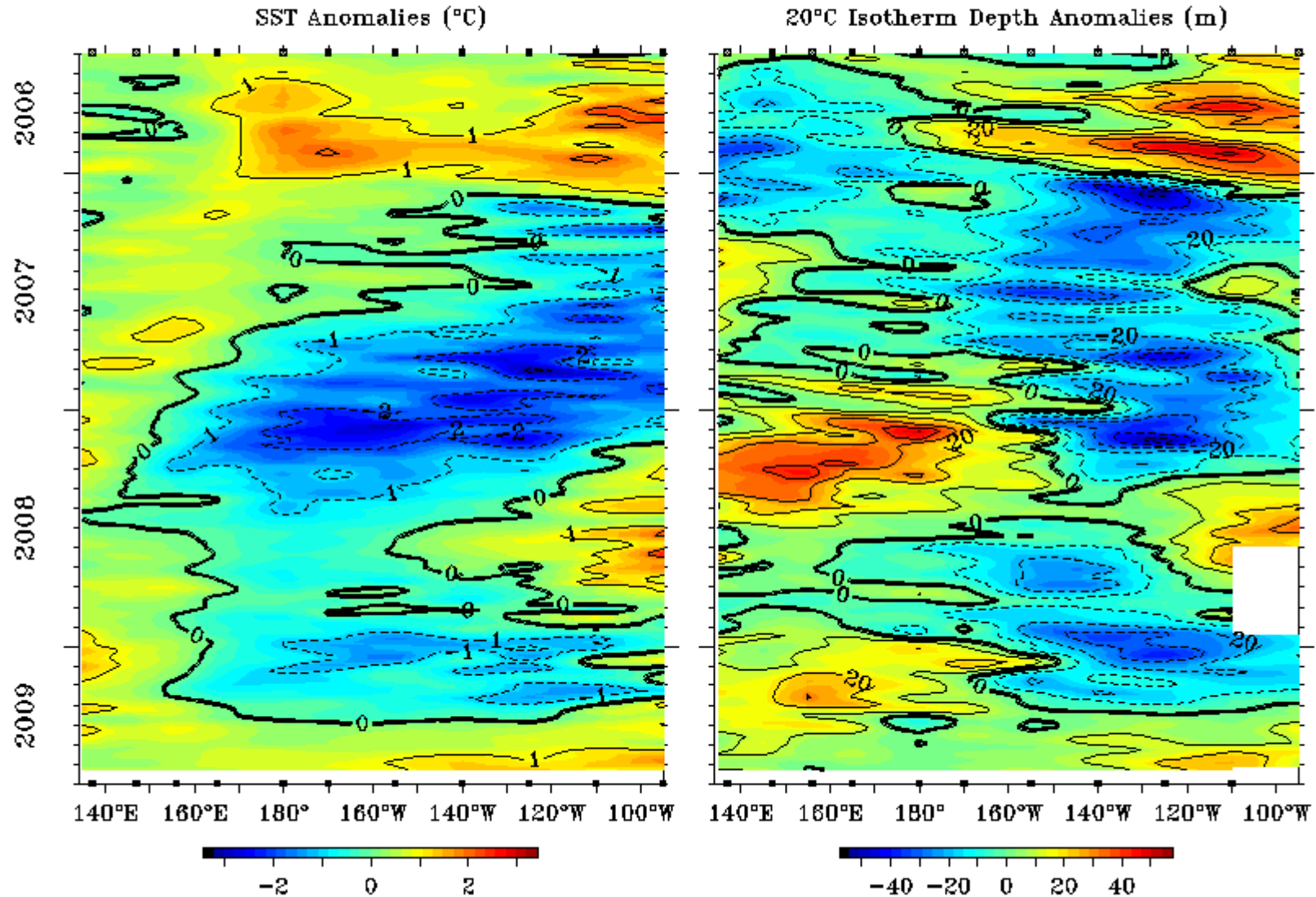


# This month OLR anomaly

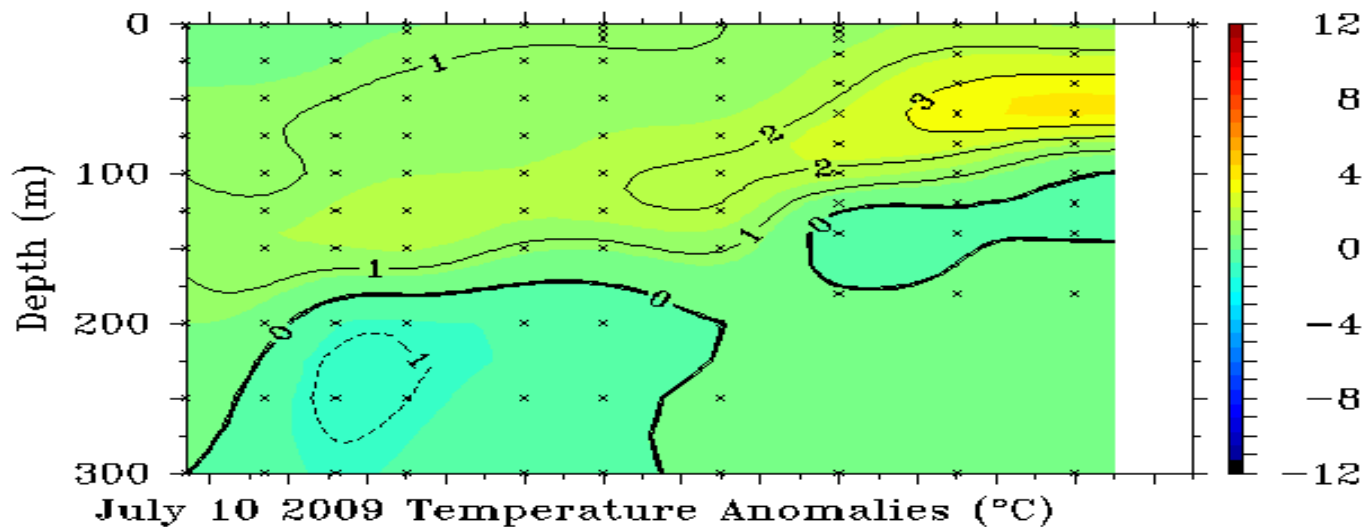
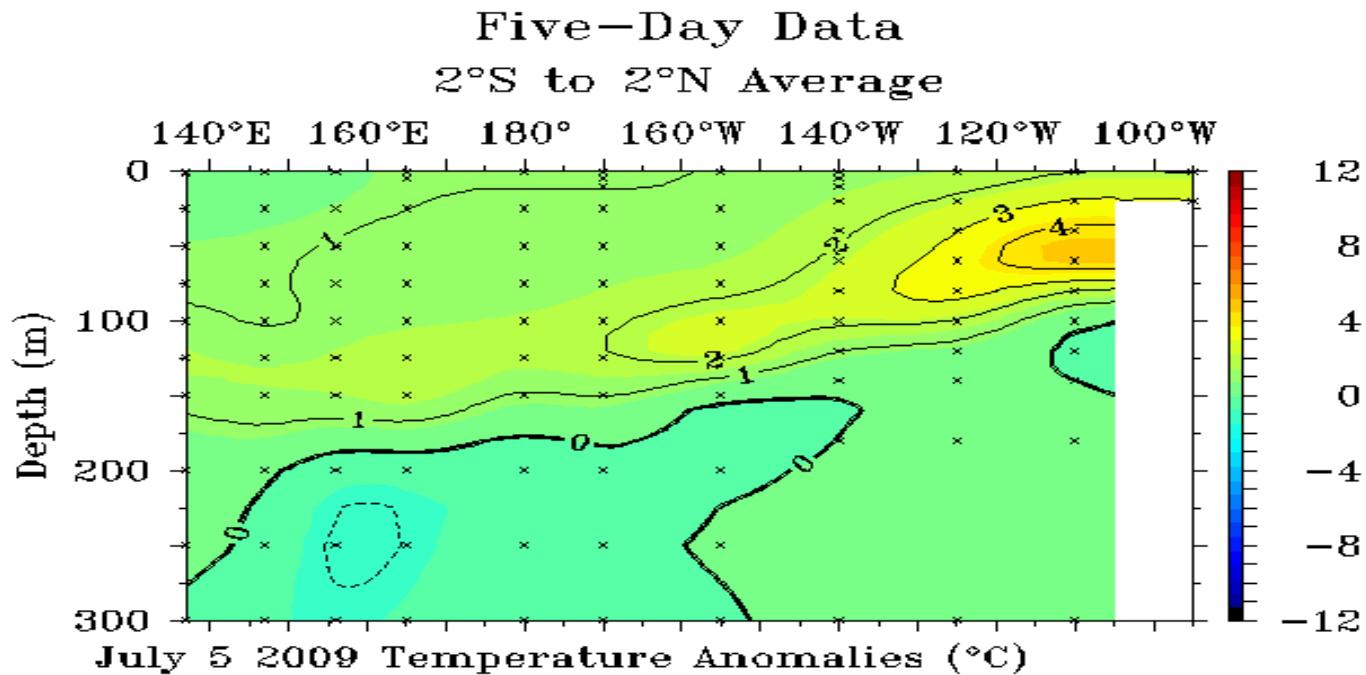


# Time Longitude section - SST/D20

Five-Day SST and 20°C Isotherm Depth 2°S to 2°N Average



# D20 last week and this week



# Winds and D20

Five-Day Zonal Wind and Dynamic Height 2°S to 2°N Average

