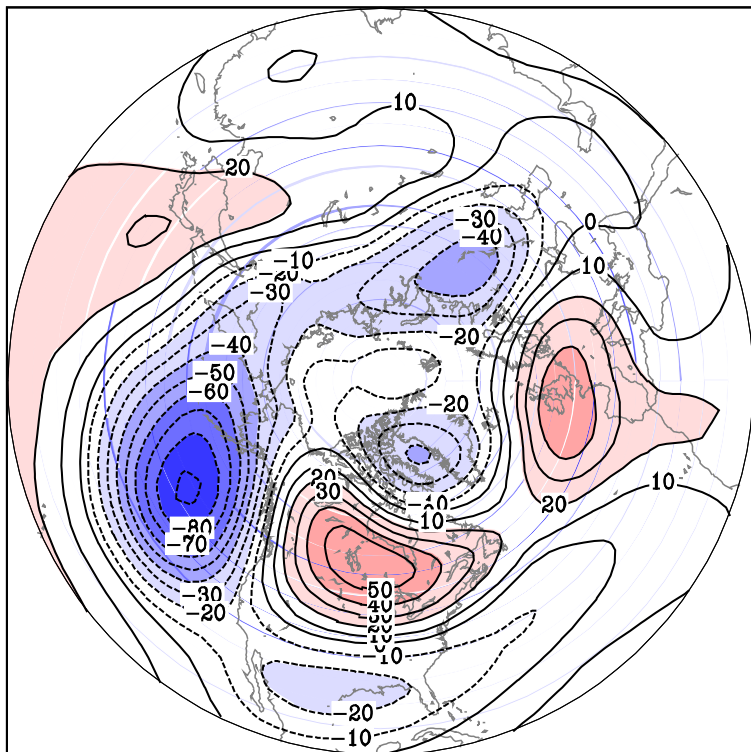


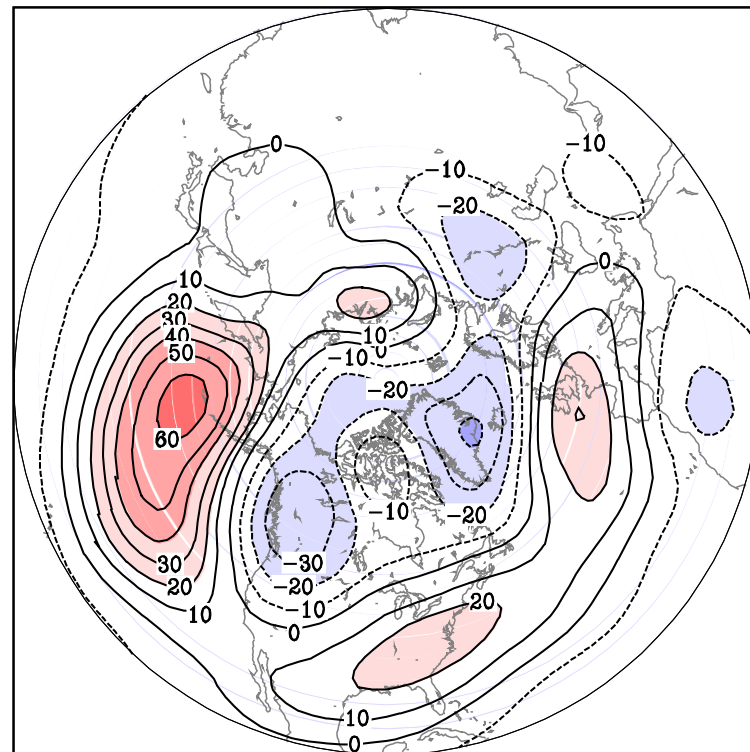
# Canadian effects of ENSO

# DJF 500 hPa geopotential height anomaly

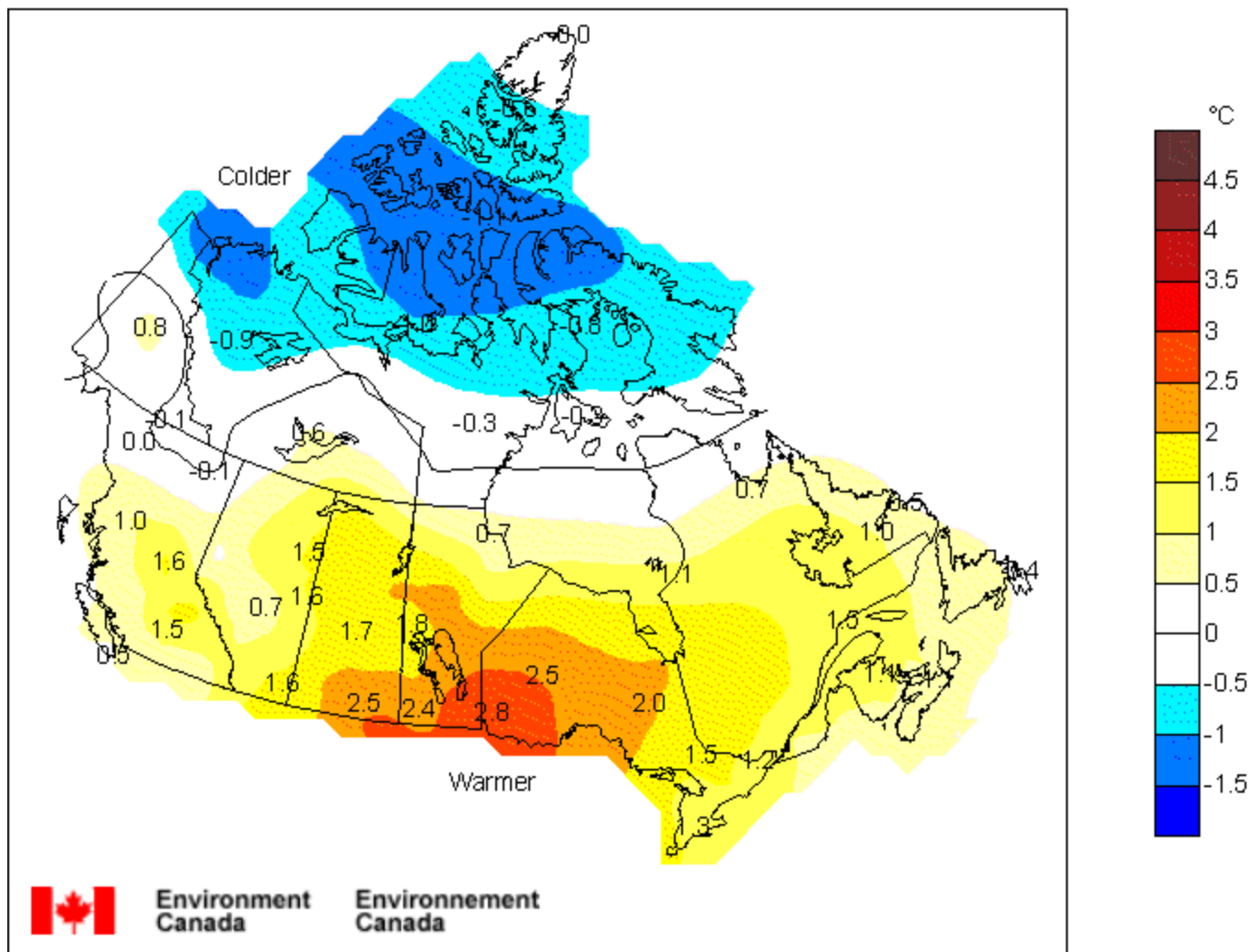
## El Nino



## La Nina

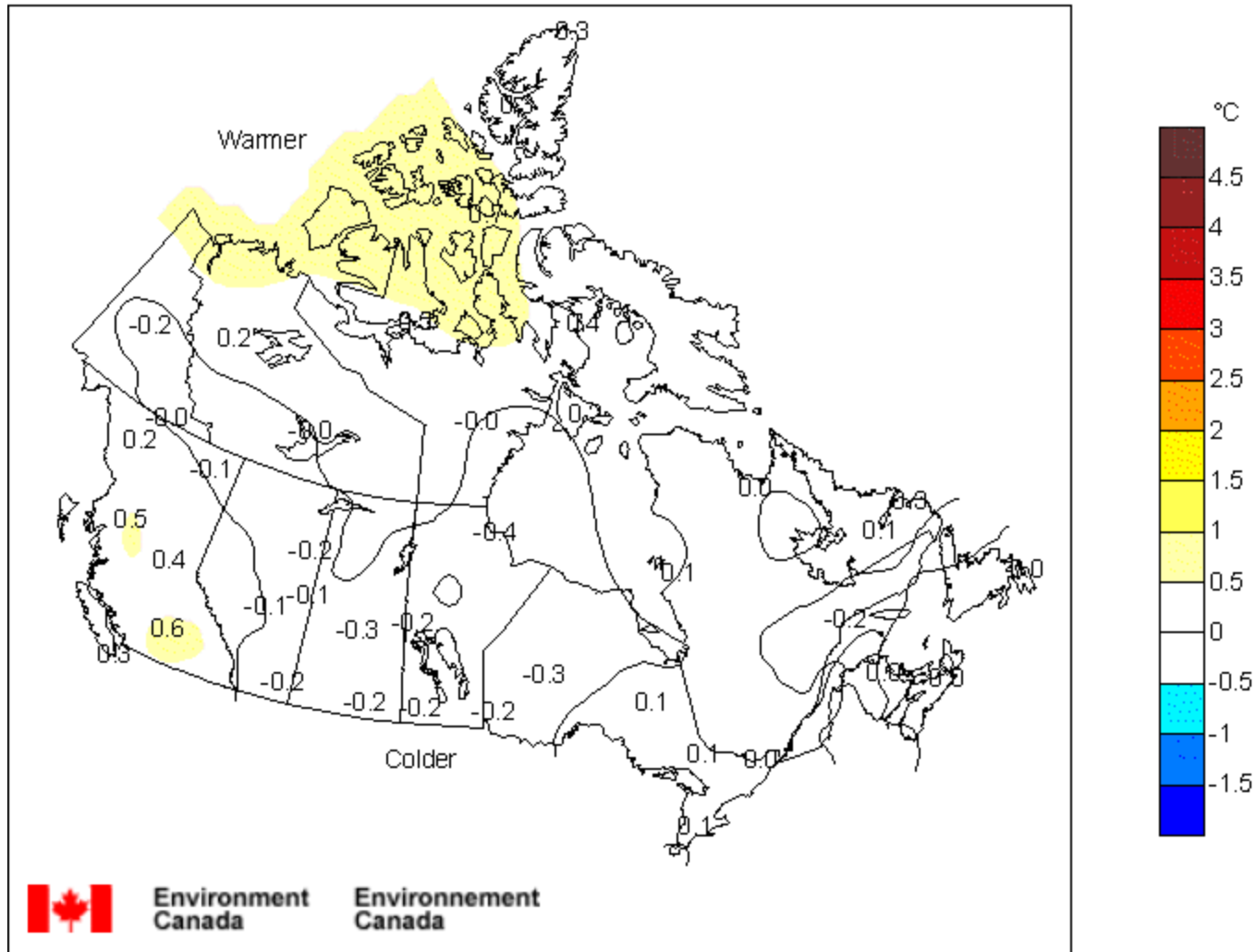


# Temperature Departure from Normal Impact of El Niño with Trend Removed Winter (Dec-Jan-Feb)

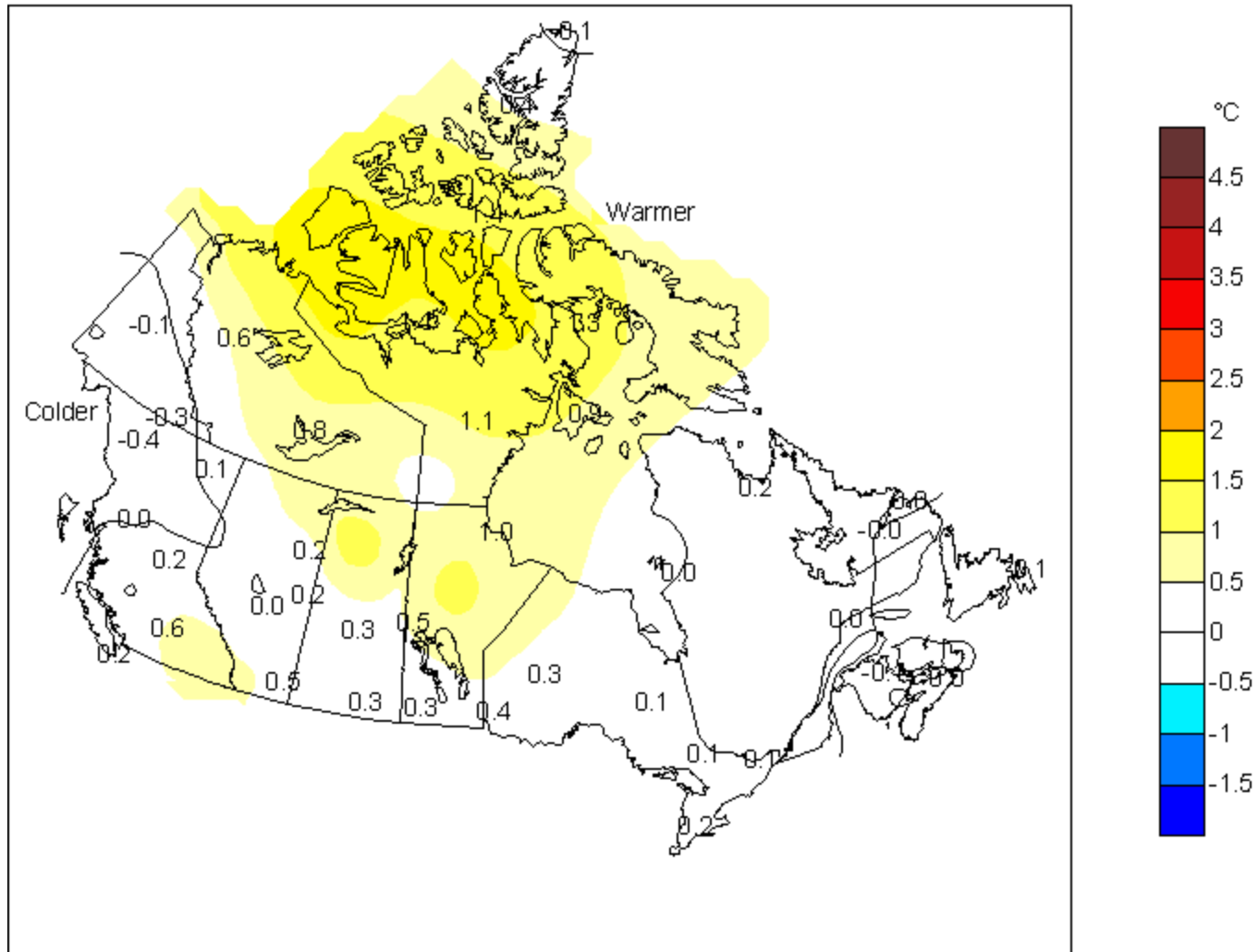




# Temperature Departure from Normal Impact of El Niño with Trend Removed Summer (Jun-Jul-Aug)

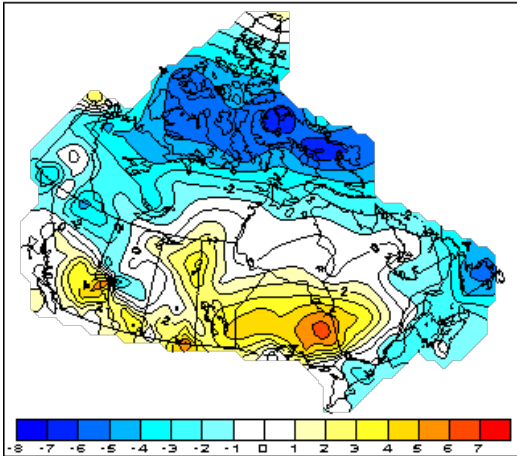


# Temperature Departure from Normal Impact of El Niño with Trend Removed Autumn (Sep-Oct-Dec)

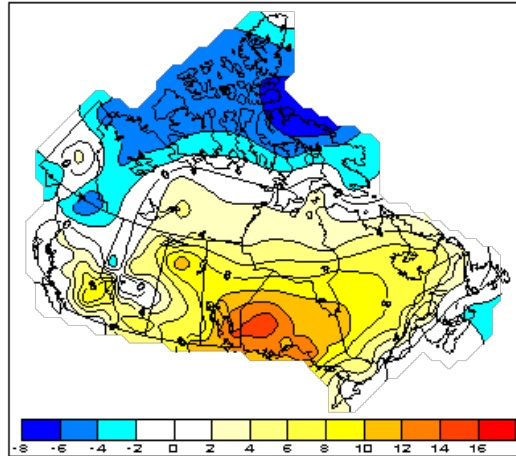


**Difference between El Niño and neutral years  
in number of days with maximum temperature at least 5°C above normal**

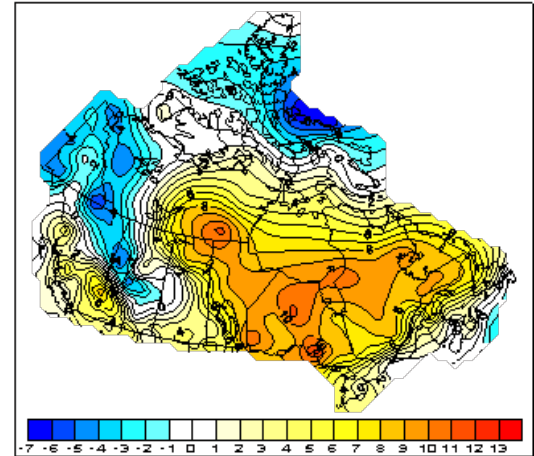
NOV-DEC-JAN



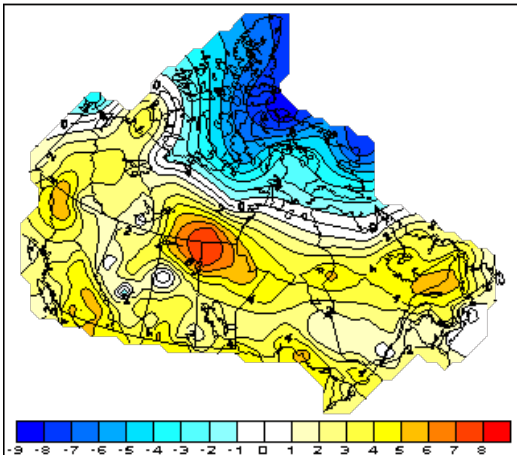
DEC-JAN-FEB



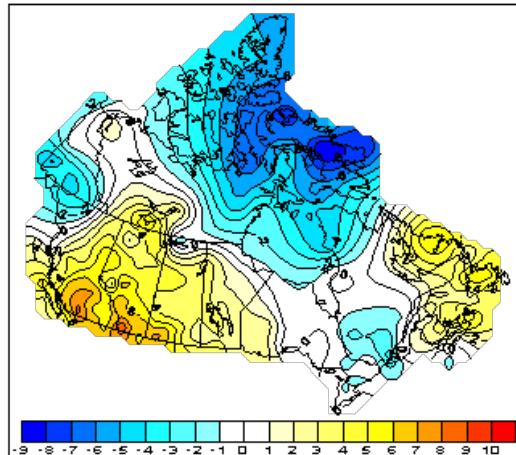
JAN-FEB-MAR



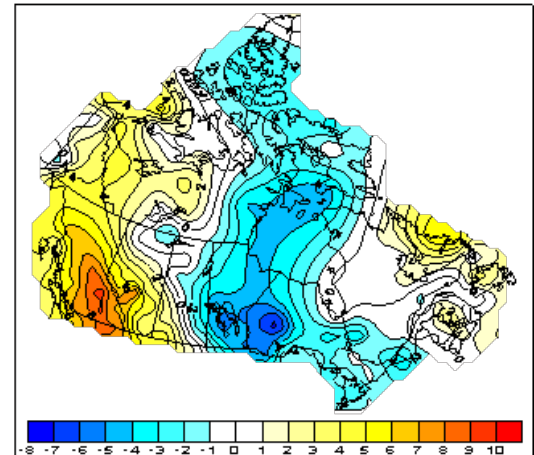
FEB-MAR-APR



MAR-APR-MAY

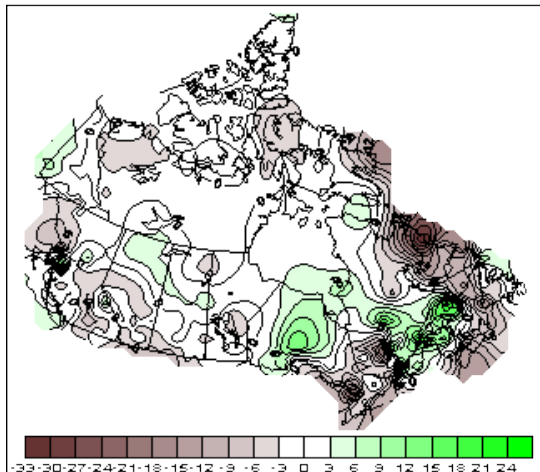


APR-MAY-JUN

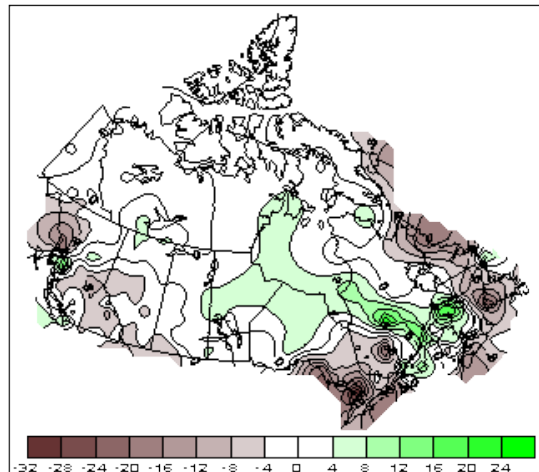


# Difference in water equivalent of snowfall between El Niño and neutral years (mm)

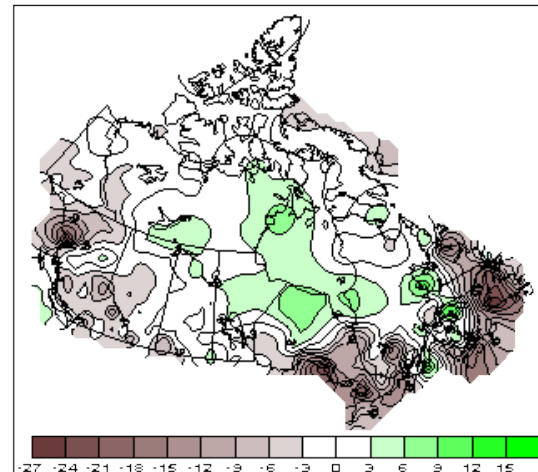
NOV-DEC-JAN



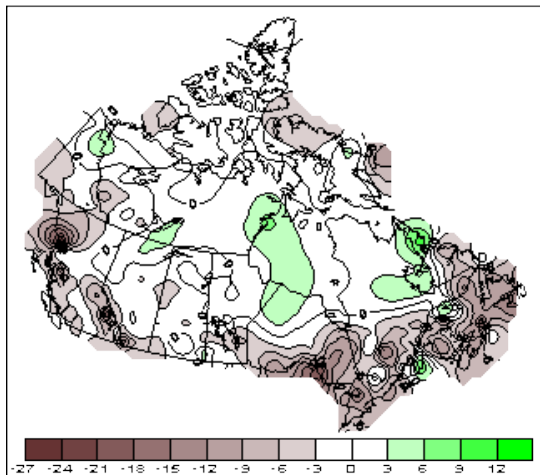
DEC-JAN-FEB



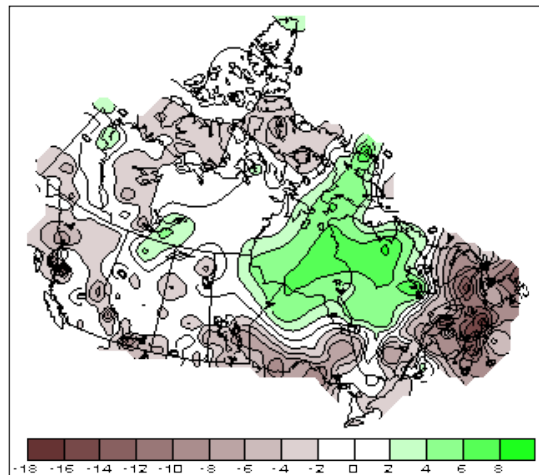
JAN-FEB-MAR



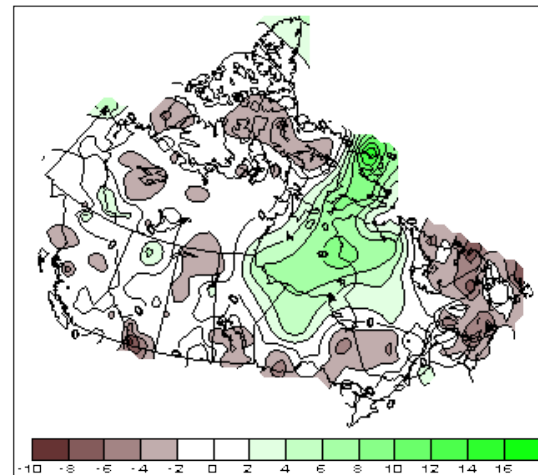
FEB-MAR-APR



MAR-APR-MAY



APR-MAY-JUN



**Mean Peak Wind Gust Change in January  
Percent change in El Niño years relative to Neutral years**

